



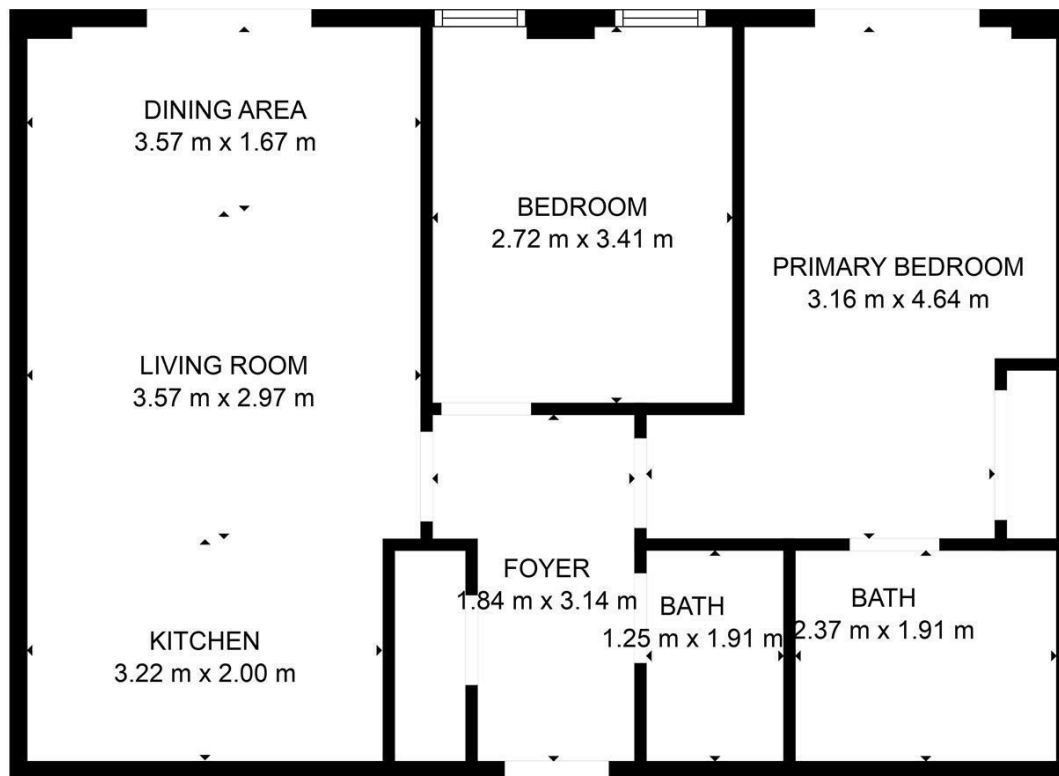
UPPER MARSHALL STREET BIRMINGHAM, B1

£995 PER MONTH

2 bedroom apartment situated on Upper Marshall Street available mid March. Comprising 2 bathrooms, 2 spacious bedrooms, comfortable kitchen and dining area as well as a fully fitted kitchen.

Please reach out for viewings asap, high demand!

PMP | INTERNATIONAL



GROSS INTERNAL AREA
FLOOR 1: 62 m²
TOTAL: 62 m²

MEASUREMENTS ARE CALCULATED BY CUBICASA TECHNOLOGY, DEEMED HIGHLY RELIABLE BUT NOT GUARANTEED.



Energy Efficiency Rating		
	Current	Potential
Very energy efficient - lower running costs		
(92 plus) A		
(81-91) B		
(69-80) C		
(55-68) D		
(39-54) E		
(21-38) F		
(1-20) G		
Not energy efficient - higher running costs		
England & Wales	EU Directive 2002/91/EC	

Agents Note: Whilst every care has been taken to prepare these particulars, they are for guidance purposes only. All measurements are approximate and are for general guidance purposes only and whilst every care has been taken to ensure their accuracy, they should not be relied upon and potential buyers/tenants are advised to recheck the measurements

London
PMP International
94 Belsize Lane
Belsize Park
London
NW3 5BE

020 7701 2878
info@pmpi.co.uk
www.pmpi.co.uk

PMP | INTERNATIONAL